



# QFH Series High Pass Filters



## SPECIFICATIONS

FREQUENCY BAND	K	Ka	Q	U	V	E	W
Frequency Range (GHz)	18-26.5	26.5-40	33-50	40-60	50-75	60-90	75-110
Waveguide Size	WR-42	WR-28	WR-22	WR-19	WR-15	WR-12	WR-10
3 dB Cutoff Frequency Range (GHz)	14-23	21-35	26-44	31-53	40-65	48-80	59-95
Insertion Loss (dB max)	0.8	0.9	1	1	1	1.2	1.2
Pass Band VSWR (typ)	1.5:1	1.5:1	1.5:1	1.5:1	1.5:1	1.6:1	1.6:1
Rejection at 90% of Cutoff Frequency (dB min) <sup>1</sup>	45	45	40	40	40	35	35

Other waveguide sizes are available.

<sup>1</sup> High pass filters are typically custom designed to meet your specific requirements. Typical performance presented here.



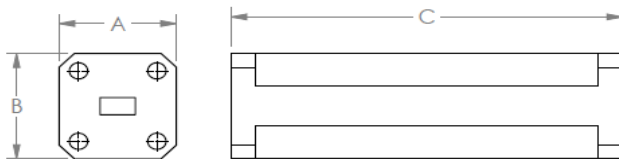
# QFH Series High Pass Filters



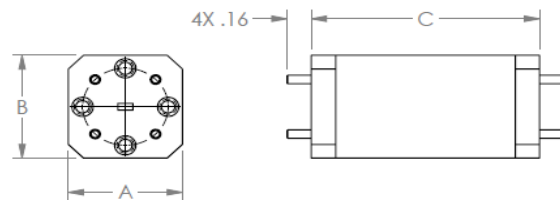
## MECHANICAL SPECIFICATIONS/OUTLINE DRAWINGS

FREQUENCY BAND	WAVEGUIDE SIZE	FLANGE PATTERN	OUTLINE DIMENSIONS, inches/mm	
			A, B	C
K	WR-42	UG-595/U	0.88/22.4	2.0/50.8
Ka	WR-28	UG-599/U	0.75/19.1	2.0/50.8
Q	WR-22	UG-383/U	1.13/28.9	2.5/63.5
U	WR-19	UG-383/U-M	1.12/28.4	2.5/63.5
V	WR-15	UG-385/U	0.75/19.1	1.5/38.1
E	WR-12	UG-387/U	0.75/19.1	1.5/38.1
W	WR-10	UG-387/U-M	0.75/19.1	1.5/38.1

\*Dimensions shown are for standard models. Please check with sales to confirm actual dimensions.



WR-22 (SQUARE FLANGE) THRU WR-42



WR-10 THRU WR-22 (ROUND FLANGE)