



QOT Series

Full Waveguide Band Orthomode Transducer



SPECIFICATIONS

Frequency Band	Ku	WR-51*	K	Ka	Q
Freq. Range (GHz)	12.4-18	15-22	18-26.5	26.5-40	33-50
V-port Insertion Loss	0.5	0.5	0.5	0.5	0.5
H-port Insertion Loss	0.5	0.5	0.5	0.5	0.5
Isolation, dB (min)	30	30	30	30	30
VSWR (max)	1.4:1	1.4:1	1.4:1	1.4:1	1.4:1
A-port Circ. ID (inch)	0.660	0.550	0.470	0.315	0.250
A-port flange			UG-425/U	UG-381/U	UG-383/U
V&H-port	WR-62	WR-51	WR-42	WR-28	WR-22
V&H-port flange	UG-419	UG-419	UG-595	UG-599	UG-383/U
Outlines	QOT-62	QOT-51	QOT-42	QOT-28 (SQ) QOT-28 (RD)	QOT-22
Frequency Band	U	V	E	W	
Freq. Range (GHz)	40-60	50-75	60-90	75-110	
V-port	0.5	0.8	0.8	0.8	
H-port	0.5	0.5	0.5	0.5	
Isolation, dB (min)	30	28	28	28	
VSWR (max)	1.4:1	1.5:1	1.5:1	1.5:1	
A-port Circ. ID (inch)	0.219	0.165	0.125	0.112	
A-port flange	UG-383/UM	UG-385/U	UG-387/U	UG-387/UM	
V&H-port	WR-19	WR-15	WR-12	WR-10	
V&H-port flange	UG-383/UM	UG-385/U	UG-387/U	UG-387/UM	
Outlines	QOT-19	QOT-15	QOT-12	QOT-10	

*Performance may vary depending on requirements, please contact QuinStar for details.



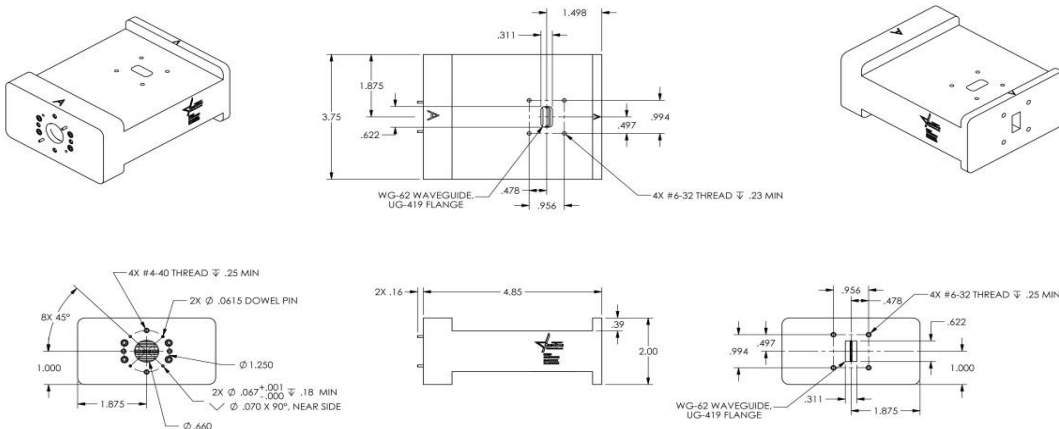
QOT Series

Full Waveguide Band Orthomode Transducer



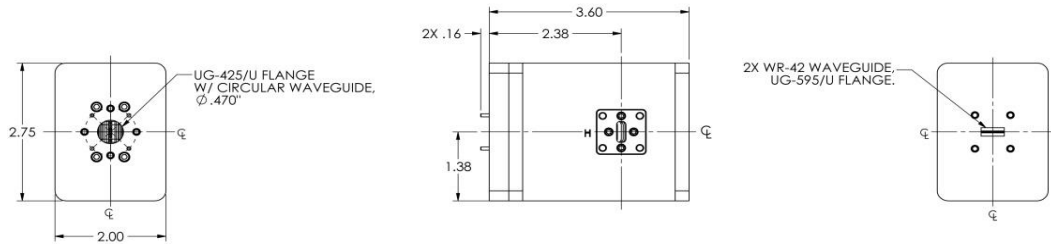
OUTLINE DRAWINGS

QOT-62, Ku-Band

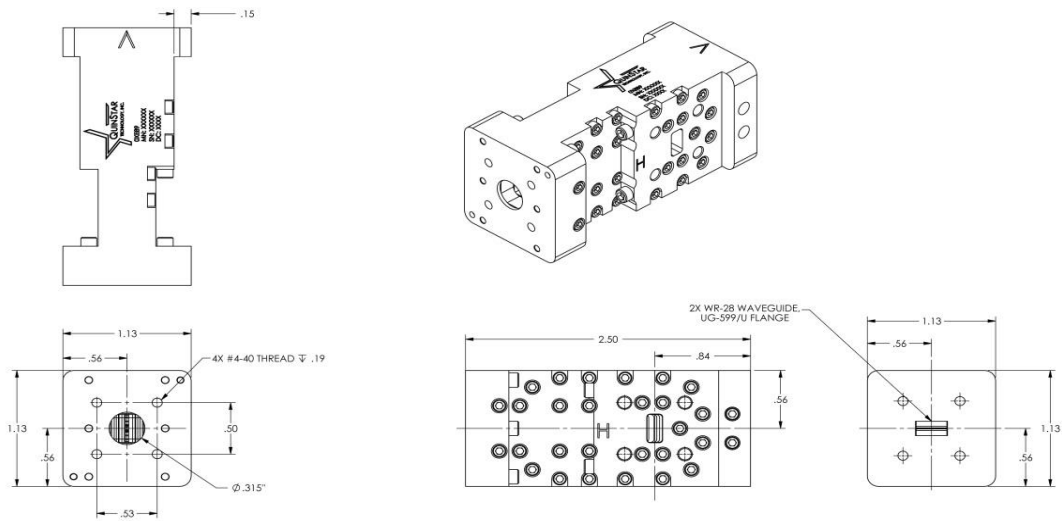


QOT-42, K-Band

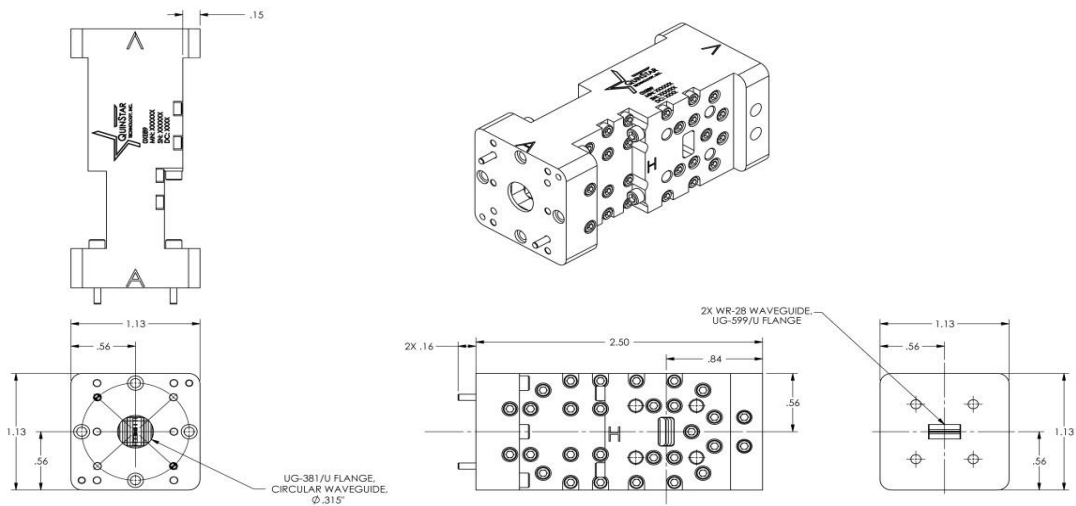




QOT-28 (Square), Ka-Band

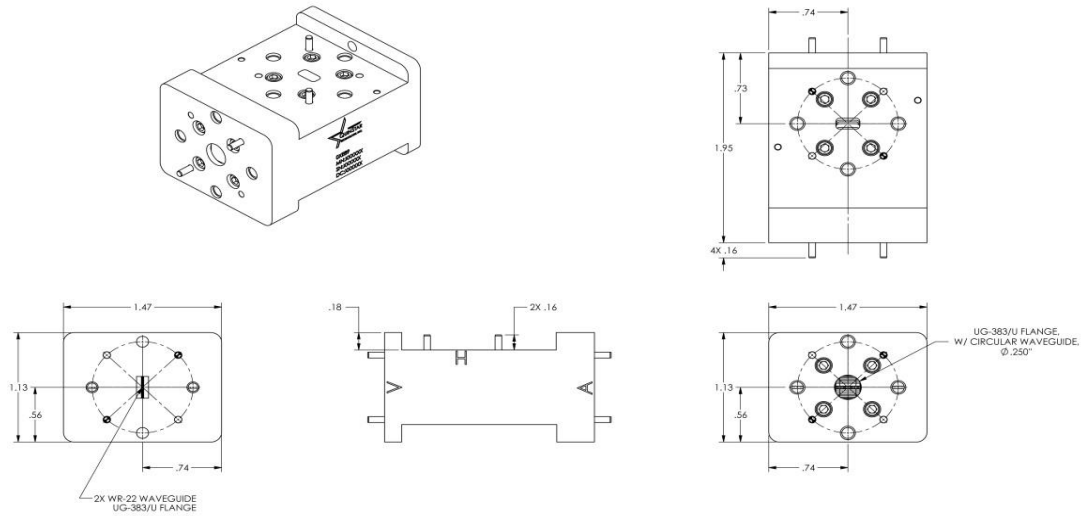


QOT-28 (Round), Ka-Band

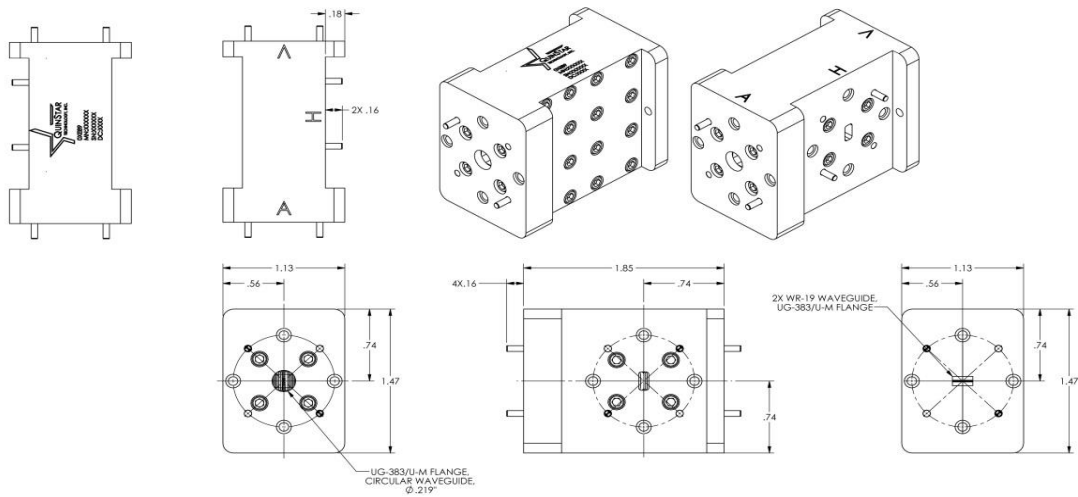




QOT-22, Q-Band

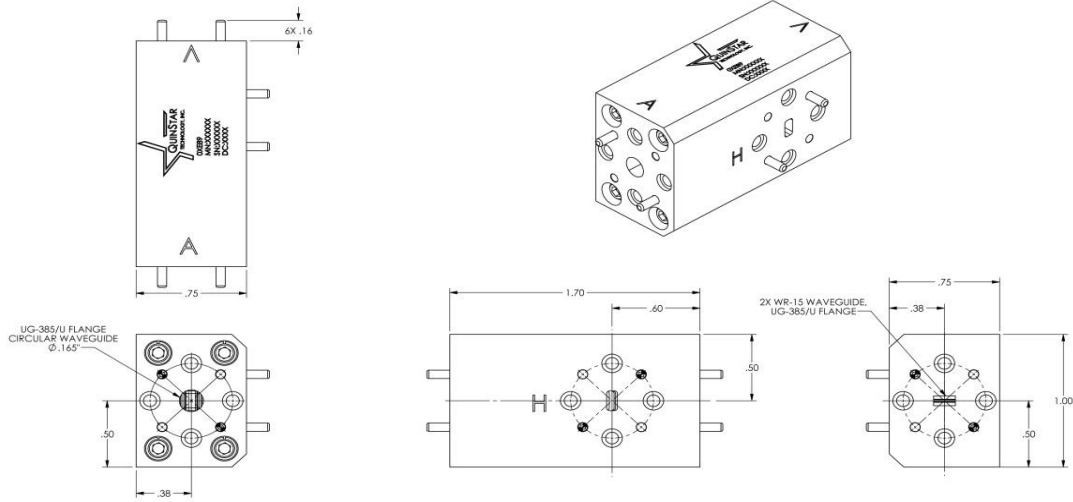


QOT-19, U-Band

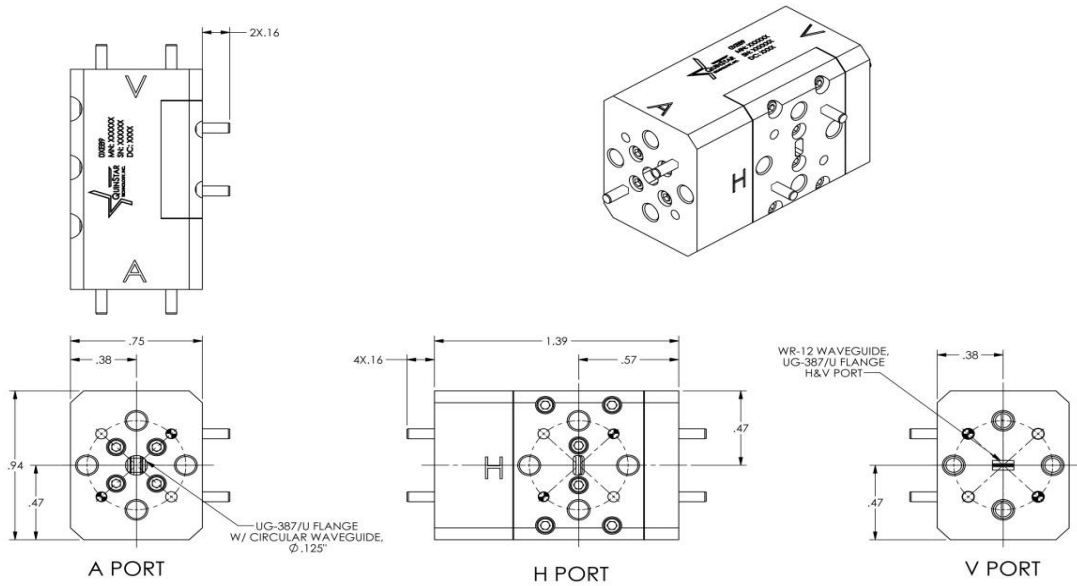




QOT-15, V-Band



QOT-12, E-Band





QOT-10, W-Band

