



QPP-94043335-00

W-Band MMW Dual-Mode SSPA

DESCRIPTION

QPP is a GaAs-based SSPA featuring high performance from 24 – 100 GHz in key frequency bands. Advanced MMICs and discrete devices deliver state-of-the-art power and high gain. The interface features waveguide or coaxial I/O. Conduction cooling through the base plate is available with optional heatsink and fans. This amplifier operates from -10°C to 60°C. QuinStar customizes amplifiers to meet specific requirements.



FEATURES

- Variable pulsed (0-100%) and CW operation
- Fast switching speed (<25 nsec typical)
- High-efficiency power combining design

APPLICATIONS

- High-reliability radar transmissions
- Data communication systems
- General test equipment

ELECTRICAL SPECIFICATIONS

| PARAMETER | MINIMUM | TYPICAL | MAXIMUM |
|-----------|---------|---------|---------|
| Frequency | 92 GHz | | 96 GHz |
| Gain | | 35 dB | |
| P_{1dB} | | +33 dBm | |

ELECTRICAL SPECIFICATIONS

| FREQUENCY (GHZ) | P_{1dB} (dBm) | P_{sat} (dBm) |
|-----------------|-----------------|-----------------|
| 92 | 31 | 34.1 |
| 93 | 30.5 | 33.5 |
| 94 | 30.3 | 33.5 |
| 95 | 30 | 33.3 |
| 96 | 30 | 33.2 |

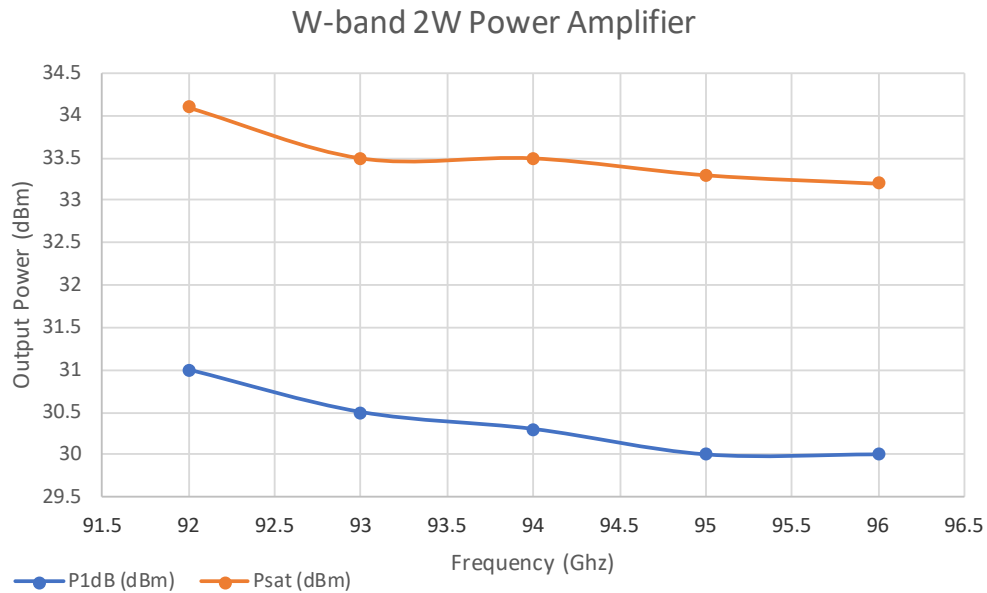
MADE IN U.S.A.



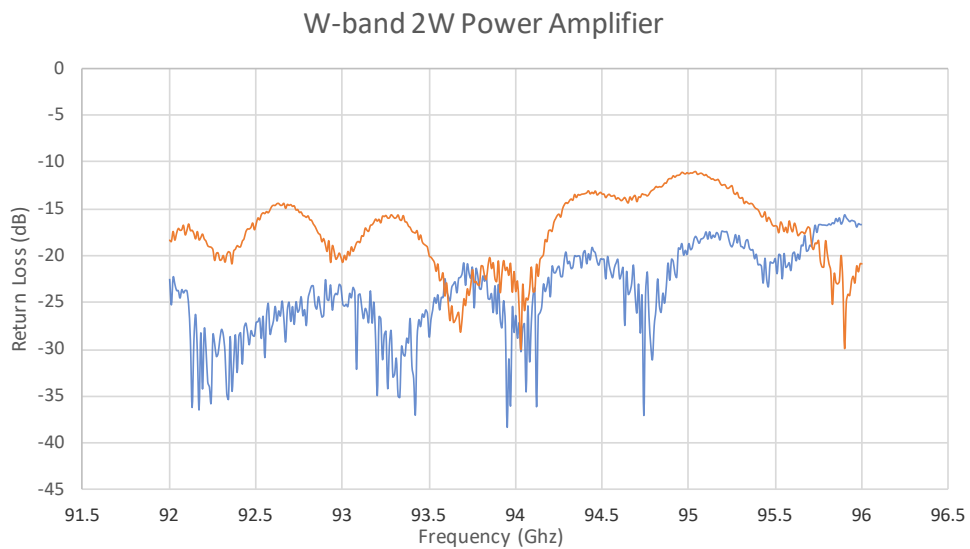
QPP-94043335-00

W-Band MMW Dual-Mode SSPA

TYPICAL OUTPUT POWER VS. FREQUENCY



TYPICAL RETURN LOSS VS. FREQUENCY

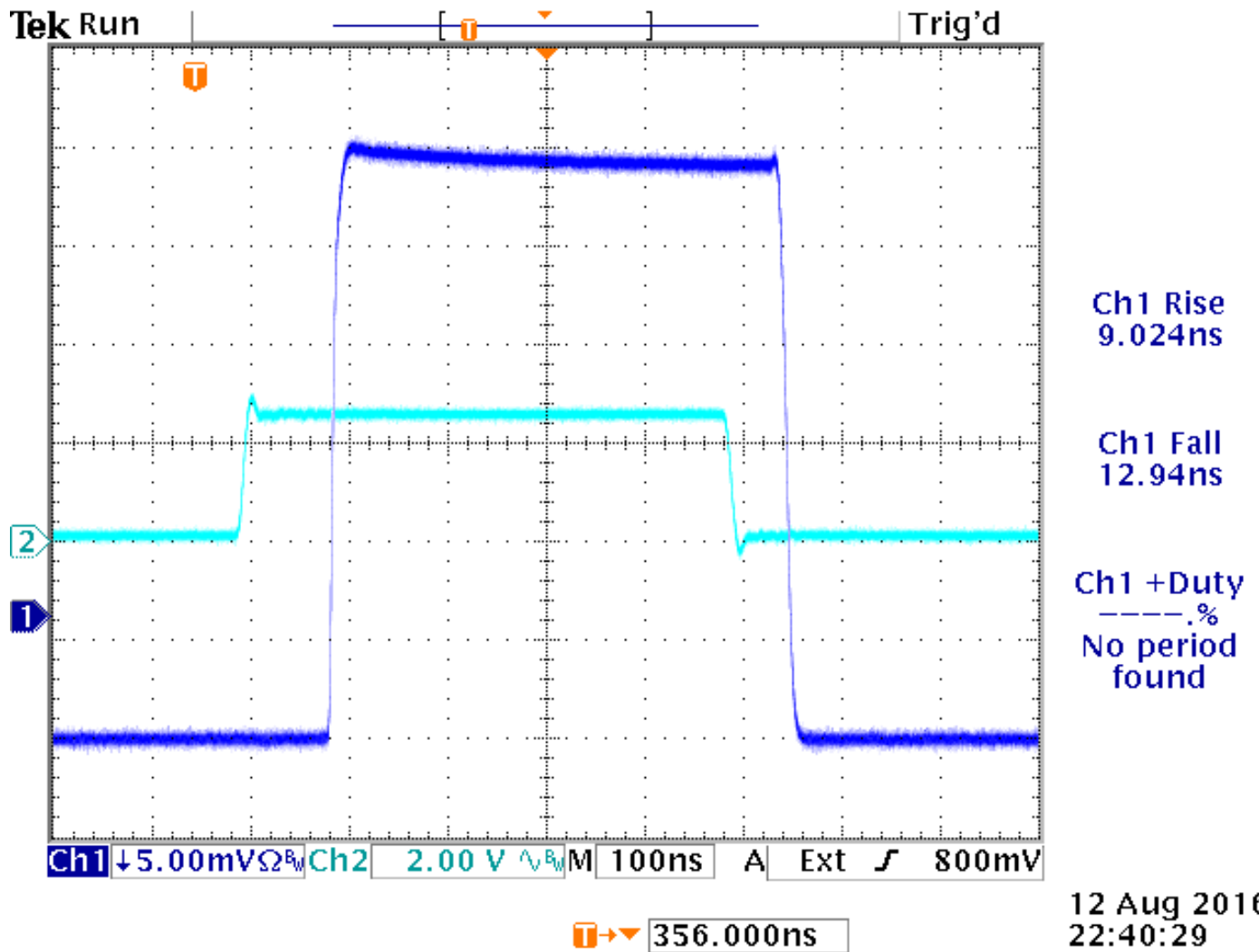




QPP-94043335-00

W-Band MMW Dual-Mode SSPA

TYPICAL PULSED AMPLIFIER ON-OFF PERFORMANCE



MADE IN U.S.A.

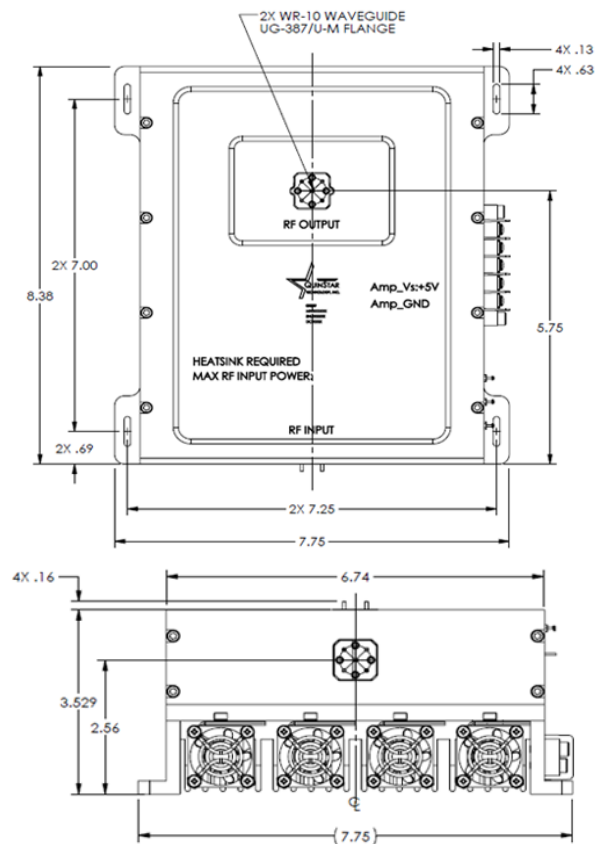
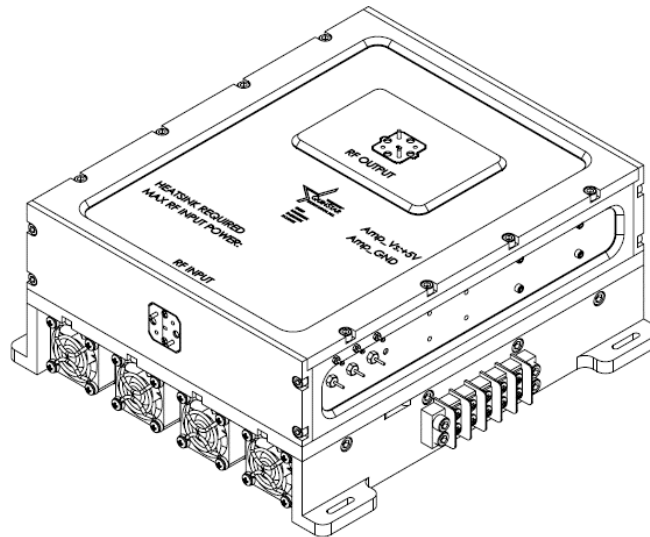


QPP-94043335-00

W-Band MMW Dual-Mode SSPA

MECHANICAL OUTLINE (WITH OPTIONAL HEATSINK AND FANS)

Note: Dimensions in Inches



MADE IN U.S.A.