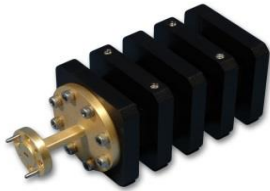




# QTW Series

## High Power Terminations

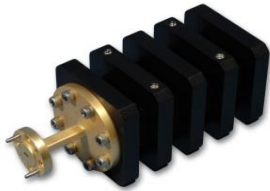


### SPECIFICATIONS

SERIES QTW HIGH POWER TERMINATIONS											
WAVEGUIDE BAND	Ku	K	Ka	Q	U	V	E	W	F	D	G
Frequency Band (GHz)	12.4-18	18-26.5	26.5-40	33-50	40-60	50-75	60-90	75-110	90-140	110-170	140-220
VSWR Max.	1.10:1	1.10:1	1.10:1	1.10:1	1.10:1	1.10:1	1.10:1	1.10:1	1.15:1	1.15:1	1.15:1
Average Power (Watts)	300	250	250	250	250	200	200	200	200	100	100

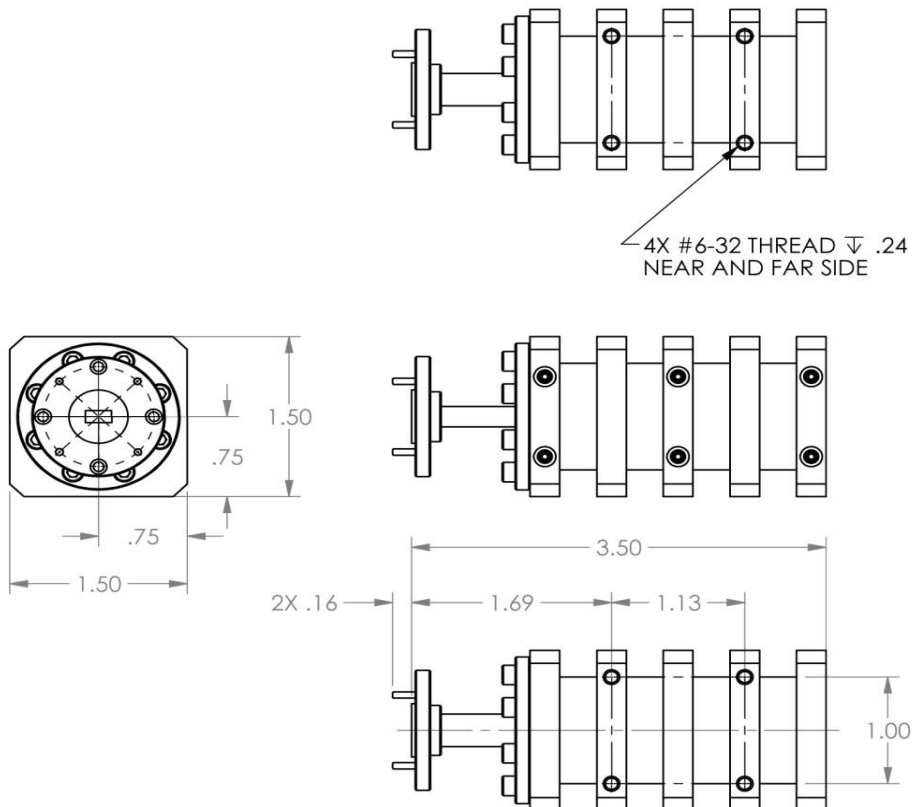


# QTW Series High Power Terminations



## OUTLINE DRAWINGS

### Round Flange





## Square Flange

