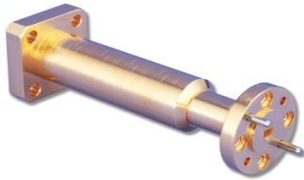




QWP Series

Waveguide Tapered Transitions



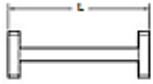
MECHANICAL SPECIFICATIONS/OUTLINE DRAWINGS

TAPERED TRANSITION LENGTHS, inches/mm					
FREQUENCY BAND	K	Ka	Q	U	V
Freq. Range (GHz)	18-26.5	26.5-40	33-50	40-60	50-75
Waveguide Size	WR-42	WR-28	WR-22	WR-19	WR-15
K-band to		2.20/56.0	2.20/56.0	2.50/64.0	2.70/69.0
Ka-band to			2.00/51.0	2.00/51.0	2.00/51.0
Q-band to				1.80/46.0	1.80/46.0
U-band to					1.60/40.6
V-band to					
E-band to					
W-band to					
F-band to					
D-band to					

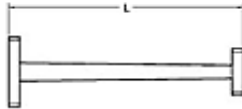
TAPERED TRANSITION LENGTHS, inches/mm					
FREQUENCY BAND	E	W	F	D	G
Freq. Range (GHz)	60-90	75-110	90-140	110-170	140-220
Waveguide Size	WR-12	WR-10	WR-8	WR-6	WR-5
K-band to	3.30/84.0	3.30/84.0	3.20/81.0	3.50/89.0	3.60/92.0
Ka-band to	2.40/61.0	1.80/46.0	2.20/56.0	2.30/58.0	2.40/61.0
Q-band to	1.80/46.0	1.80/46.0	1.80/46.0	1.80/46.0	1.90/48.3
U-band to	1.50/38.0	1.50/38.0	1.50/38.0	1.50/38.0	1.60/40.6
V-band to	1.40/36.0	1.40/36.0	1.40/36.0	1.40/36.0	1.40/36.0
E-band to		1.30/33.0	1.30/33.0	1.30/33.0	1.30/33.0



W-band to			1.20/31.0	1.20/31.0	1.20/31.0
F-band to				1.10/27.0	1.10/27.0
D-band to					1.00/26.0



Straight Section



Tapered Transition