



# Circular Waveguide Terminations

QTC

## Characteristics

- ◆ Low VSWR
- ◆ Full Circular Waveguide Bandwidth

## Product Description

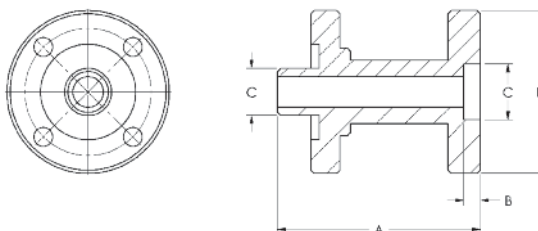
QuinStar Technology's QTC series termination is a section of circular waveguide with an integral conical load made from a dielectric absorber material. The long precise taper allows

optimum absorption of the microwave energy with minimum reflection. Each termination is fitted with a standard male or female circular flange, specified at the time of order. The QTC terminations are used in experimental and developmental test set-ups where a low VSWR waveguide load is essential for measurement validity. When measuring the VSWR that results from insertion of various waveguide components in a system, these terminations ensure precise determination of the individual effects.

## Specifications

Frequency Range (GHz)	11.6-48.0	48.0-96.0	96.0-150.0
VSWR	1.05	1.08	1.10

## Outline Drawings/Mechanical Specifications



CIRCULAR WAVEGUIDE INTERNAL DIAMETER	OUTLINE DIMENSIONS, inches/mm			
	A	B	C	D
0.210	2.22/56.39	.211/5.36	.250/6.35	1.20/30.48
0.250	2.22/56.39	.211/5.36	.291/7.39	1.20/30.48
0.291	2.22/56.39	.211/5.36	.375/9.53	1.20/30.48
0.353	2.22/56.39	.211/5.36	.437/11.10	1.20/30.48
0.495	4.26/108.2	.264/6.71	.625/15.88	1.95/49.53
0.545	3.76/95.5	.264/6.71	.625/15.88	1.95/49.53
0.634	3.76/95.5	.264/6.71	.750/19.05	1.95/49.53
0.688	4.76/120.9	.264/6.71	.788/20.02	1.95/49.53

Contact QuinStar for other circular waveguide diameters.

## Ordering Information

Model Number **QTC - A BCD 00**

Flange Type  
M = Male  
F = Female

Circular waveguide diameter  
(in mils or thousandths of inch)