

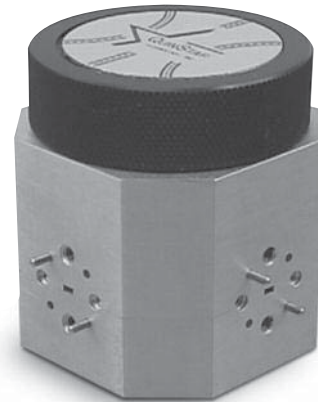


# Manual Waveguide Switches

**QWM**

## Characteristics

- ◆ Full Waveguide Band
- ◆ Low Loss
- ◆ High Isolation
- ◆ Smooth, Accurate Positioning



## Product Description

QuinStar Technology's series **QWM waveguide switches** are manual 4-port devices. They have a 3-channel rotor accurately indexed to eight 45 degree positions that allows each port to be connected or isolated from any other port. The switches are available in seven waveguide bands covering the frequency range of 18-110 GHz and are

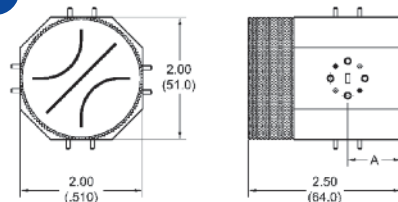
precision machined with bearing and indexing grooves for smooth operation and accurate positioning. They are useful in test set-ups and system applications where transfer switching is required. In addition to standard manual switches, custom electromechanical waveguide switches are also available.

## Specifications

FREQUENCY BAND	K <sup>1</sup>	Ka	Q	U	V	E	W
Frequency Range (GHz)	18-26.5	26.5-40	33-50	40-60	50-75	60-90	75-110
Waveguide Size	WR-42	WR-28	WR-22	WR-19	WR-15	WR-12	WR-10
Flange Pattern	UG-595/U	UG-599/U	UG-383/U	UG-383/U	UG-385/U	UG-387/U	UG-387/U
Bandwidth (GHz)	Full						
Isolation (dB typical)	60						
Insertion Loss (dB max)	0.4	0.4	0.5	0.5	0.6	0.7	0.8
VSWR (typical)	1.15:1						
Dimension "A" (inches/mm)	0.74/18.7	0.73/18.5	0.72/18.3	0.71/18.0	0.70/17.8	0.69/17.5	0.68/17.2

<sup>1</sup> K-band two-channel bidirectional rotor.

## Outline Drawing



## Ordering Information

Model Number **QWM - A 00000**

← waveguide band designator

- K = K-band
- Q = Q-band
- V = V-band
- W = W-band
- A = Ka-band
- U = U-band
- E = E-band