

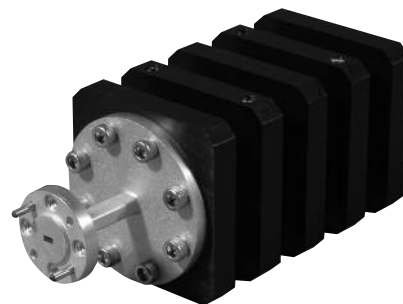


Waveguide Terminations

QWN/QTW/QTZ

Characteristics

- ◆ Low VSWR
- ◆ Compact Size
- ◆ Full Waveguide Bandwidths
- ◆ Available for High Power up to 300 watts CW Applications



Product Description

QuinStar Technology offers a broad line of waveguide terminations in a variety of shapes and style, wide range of power handling capacities and cooling methods to suit both typical and special applications. The QWN series Standard Waveguide Terminations consist of an RF-absorbing matched load mounted in a short length of flanged waveguide. These standard terminations, offered in the K through G waveguide bands can dissipate 1 to 5 Watts of power depending on the specific band. They also present a low VSWR over the full waveguide band.

The QTW series High Power Terminations are produced with standard waveguide flange interface from 12.4 to 220 GHz in Ku through G bands. The termination consists of a short length of waveguide and an integral matched terminal load. Individual resistive dielectric loads are

tapered to precise wedge configurations for maximum effective power absorption. The gradual taper ensures a low VSWR over the full waveguide band. These loads have the capacity to absorb from 100 Watts to 300 Watts of power depending on the frequency band.

Series QTZ Custom High Power Terminations are available with custom form factors and features for radar and other high power transmitter applications. These terminations are specially designed and manufactured to meet the customer's mechanical and electrical requirements, and may incorporate convection cooling, active forced-air cooling or liquid cooling to dissipate the heat generated from power absorption. They are available within the C to Ku-bands, with power handling capacities up to 4 kW CW.

Specifications

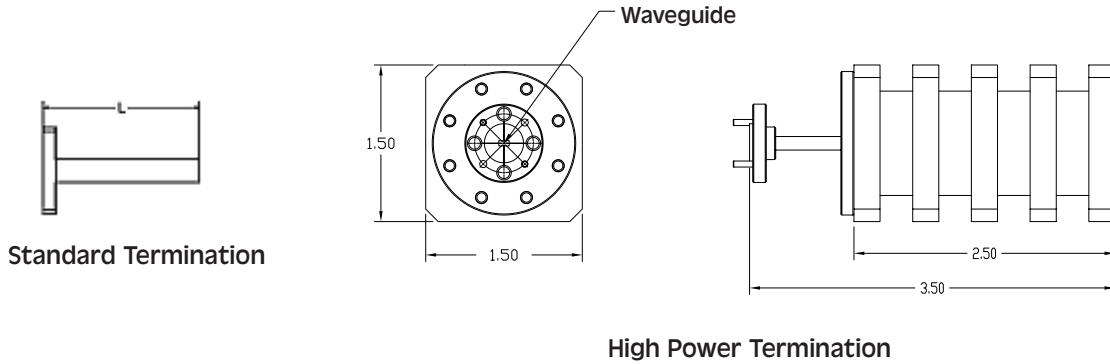
SERIES QWN STANDARD TERMINATIONS											
WAVEGUIDE BAND	K	Ka	Q	U	V	E	W	F	D	G	
Frequency Range (GHz)	18-26.5	26.5-40	33-50	40-60	50-75	60-90	75-110	90-140	110-170	140-220	
Waveguide Size	WR-42	WR-28	WR-22	WR-19	WR-15	WR-12	WR-10	WR-8	WR-6	WR-5	
VSWR (max.)	1.03:1	1.03:1	1.04:1	1.05:1	1.05:1	1.06:1	1.06:1	1.08:1	1.1:1	1.12:1	
Power Handling (W)	5	5	4	4	3	3	3	3	1	1	
Length (in/mm)	3.31/84.0	2.81/71.3	2.56/65.0	2.56/65.0	1.56/39.6	1.56/39.6	1.56/39.6	0.9/22.8	0.90/22.8	0.9/22.8	
SERIES QTW HIGH POWER TERMINATIONS											
WAVEGUIDE BAND	Ku	K	Ka	Q	U	V	E	W	F	D	G
Frequency Band (GHz)	12.4-18	18-26.5	26.5-40	33-50	40-60	50-75	60-90	75-110	90-140	110-170	140-220
VSWR Max.	1.10:1	1.10:1	1.10:1	1.10:1	1.10:1	1.10:1	1.10:1	1.10:1	1.15:1	1.15:1	1.15:1
Average Power (Watts)	300	250	250	250	250	200	200	200	200	100	100



Waveguide Terminations

QWN/QTW/QTZ

Outline Drawings/Mechanical Specifications



Ordering Information

